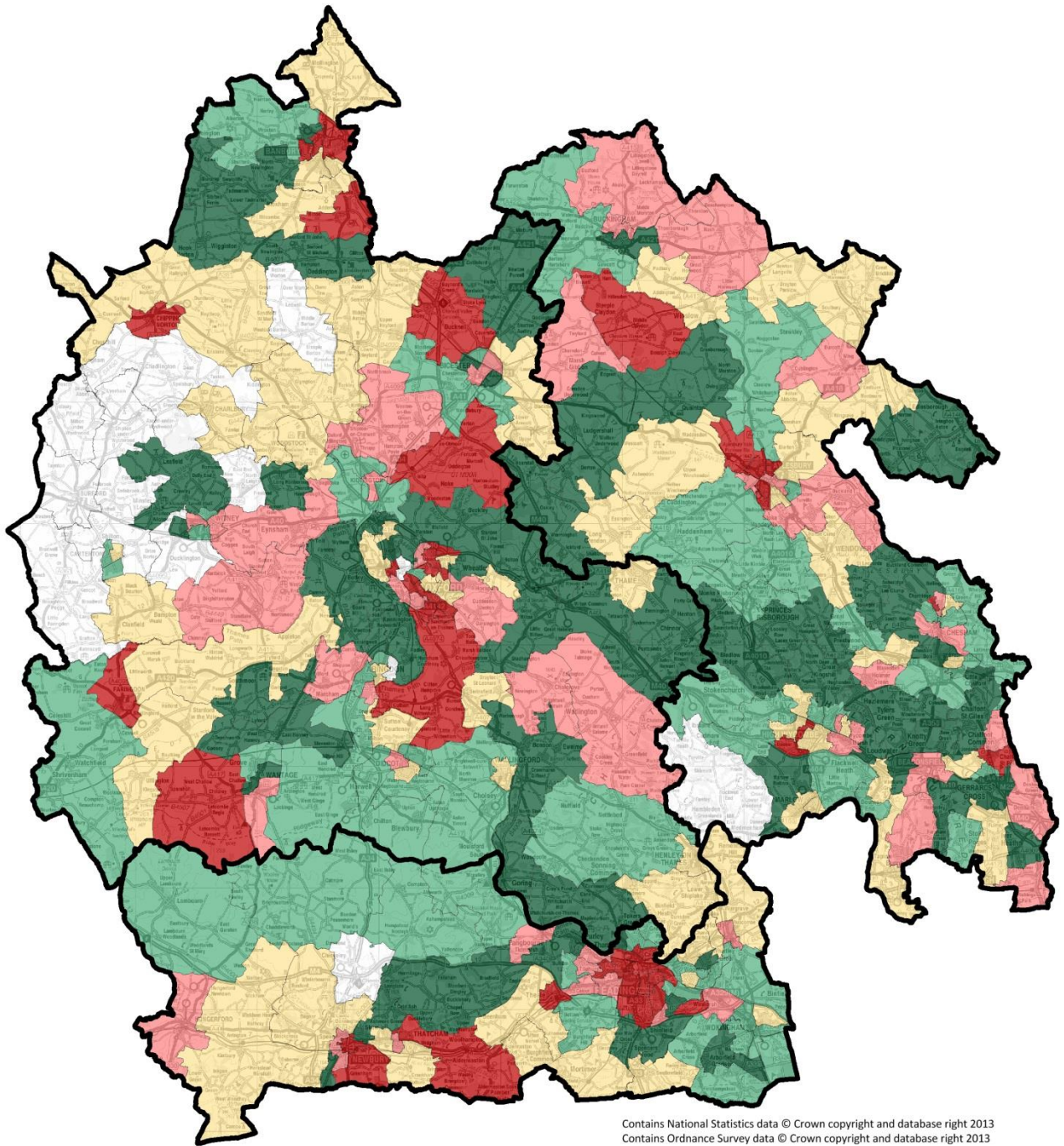


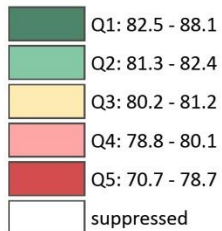
Life expectancy at birth (male)



Contains National Statistics data © Crown copyright and database right 2013
Contains Ordnance Survey data © Crown copyright and database right 2013

Produced by Buckinghamshire Public Health (publichealth@buckscc.gov.uk), May17

Male life expectancy at birth by Ward, years Population-weighted quintiles



Population-weighted quintile estimates from ward-level data in Local Health.

Quintile thresholds are adjusted to include all wards with tied indicator values. Wards are allocated to the 'better' quintile.

The worst quintile in BOB includes 46 wards (out of 280 wards with recorded data), and makes up 20.0% of the total population. Buckinghamshire has 10 wards in the worst quintile, and these are;

- Gatehouse (278)
- Ridgeway (275)
- Riverside (272)
- Elmhurst (269)
- Booker and Cressex (268)
- Southcourt (256)
- Walton Court & Hawkslade (245)
- Oakridge and Castlefield (244)
- Steeple Claydon (239)
- Central (236)

[Rank in brackets, where 280 is worst in BOB]

The population in each quintile, for this indicator, is as follows;

Quintile	Population	#Wards
Q1	329,116	65
Q2	338,455	59
Q3	347,975	61
Q4	291,093	49
Q5	327,207	46
Total	1,633,846	280

For this indicator 62,308 people in Bucks are in quintile 5 (19% of the quintile); this is lower than expected.

Notes on the indicator

13 wards in total were suppressed in BOB (1 Buckinghamshire - Hambleton Valley, 1 Berkshire & 11 Oxfordshire) for this indicator.

Methodology/Suppression: Life expectancy values have not been presented for areas where the population is less than 5,000, where there are no deaths in the 90+ age group, where the number of deaths in the 90+ age group is greater than the population estimate for that age group, or where the confidence interval around the life expectancy value is greater than 20 years.

OA deaths and population estimates were aggregated to wards using standard geographical lookup tables obtained from ONS Geography.

Definition: Life expectancy at birth is an estimate of the average number of years a newborn baby would survive if he experienced the age-specific mortality rates for that area and time period throughout his/her life.

Source: Mortality data from ONS annual death extracts and ONS 2010-2014 mid-year population estimates.